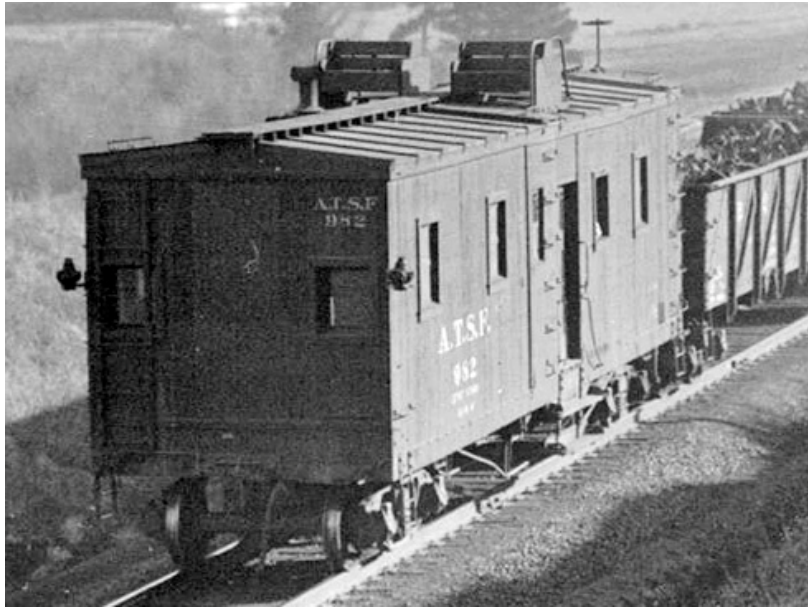


Highlands Railway Caboose #248
by Jack Hess



Some boxcars converted into cabooses.

With this project I want to build a makeshift caboose from a reefer.



Atlas O scale 36' trussrod reefer. The trussrods need work.



Some of the details I plan on using on the conversion.



The first step is to decide which details should be removed before paint stripping. The side doors and hinges along with the ice hatches will be removed as these parts won't be included in the finished car. The grab irons and end detail will be used on the finished car and will be left in place.



Doors and hinges removed.



Body removed from frame. Doors, hinges, ice hatches, hinges and lock down levers removed, along with all six stirrups and brake wheel staff.



Paint is stripped from body.



The interior was left as shown as no interior will be built and area not seen.



The boards at the sides of the door opening that held the hinges were removed as well as the board under the drip edge. The insert was made slightly oversized and will be cut to size when the door is installed.



Window location lines were laid out on the side with a red Sharpie. The window to the right of the styrene door plug is cut to proper size and the Tichey window fitted. The other three windows were cut out by drilling inside the cut lines and then using the drill to remove the plastic between the holes. The windows on the end are connected to the body mounting lugs, so the lugs will need to be cut out with a saw blade.



Windows have been cut out on the side. Door location is marked but won't be cut out until all the windows are completed--this is so the body has strength for handling while cutting out the windows.



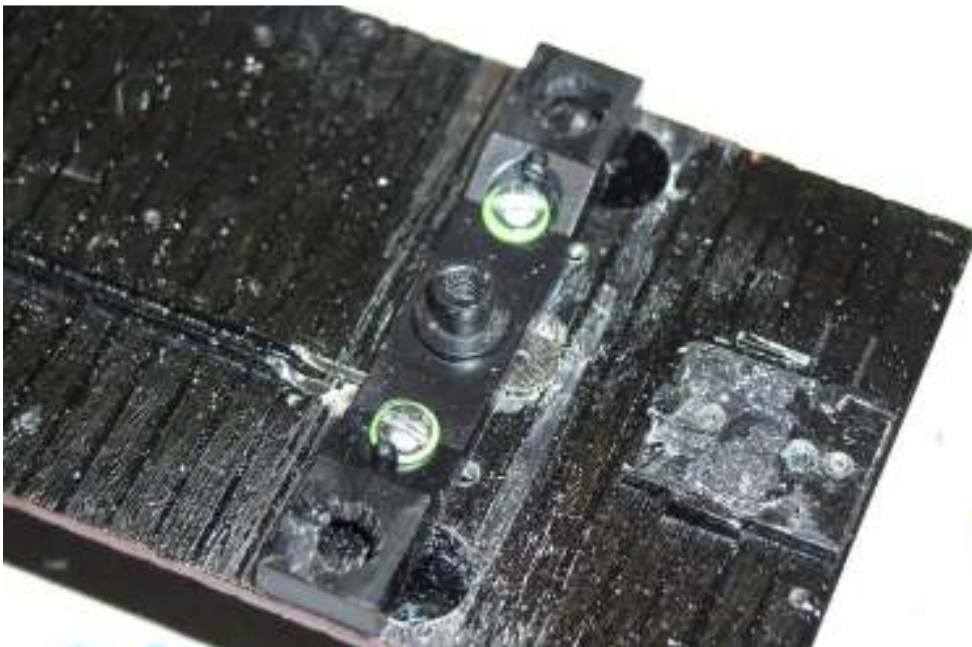
One end window is cut out.



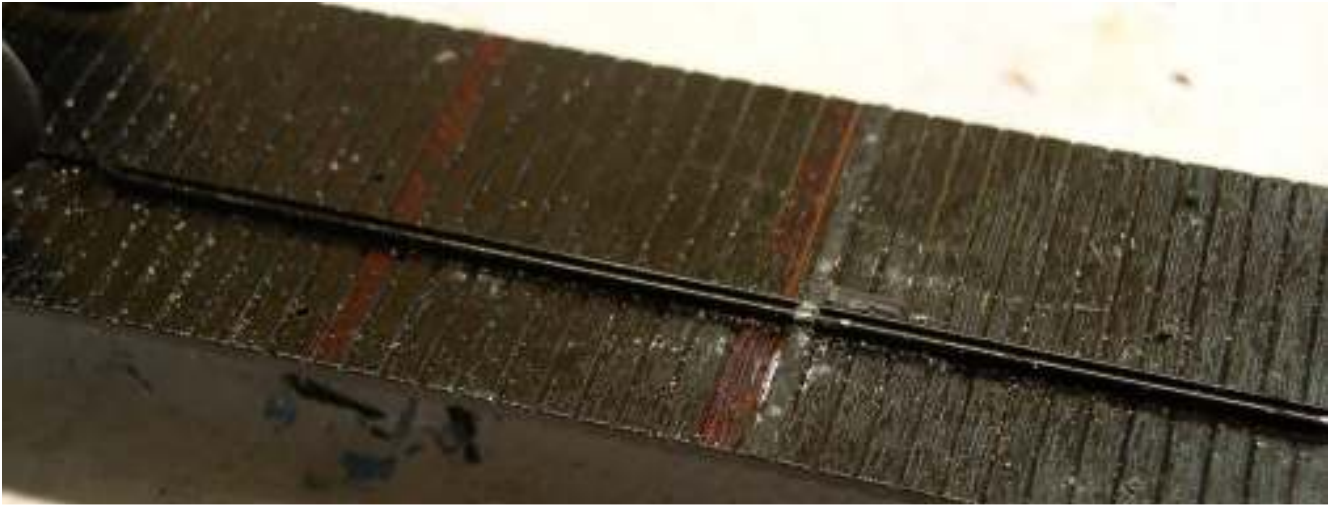
The body is ready for primer.



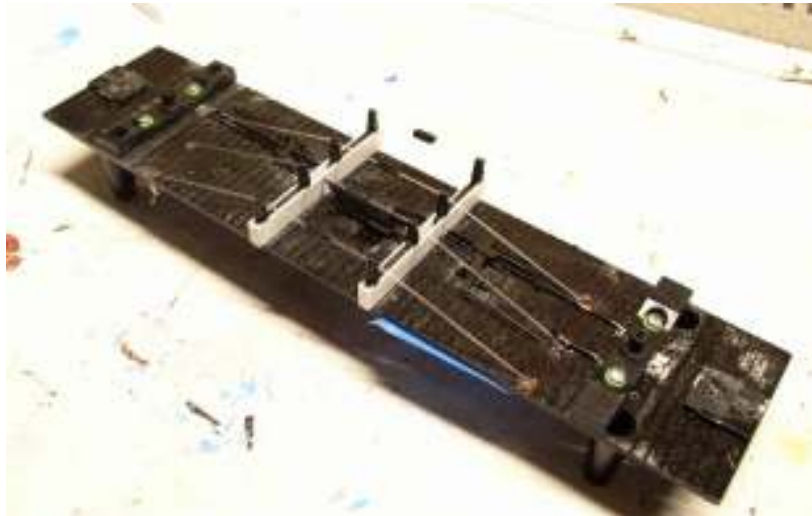
Chassis had been attacked by a bottle of CA glue and the body bolster would not come off the metal floor. I had to drill holes in one body bolster in order to remove the screws to remove the chassis from the body casting. The plastic underframe had to be broken into pieces to be removed.



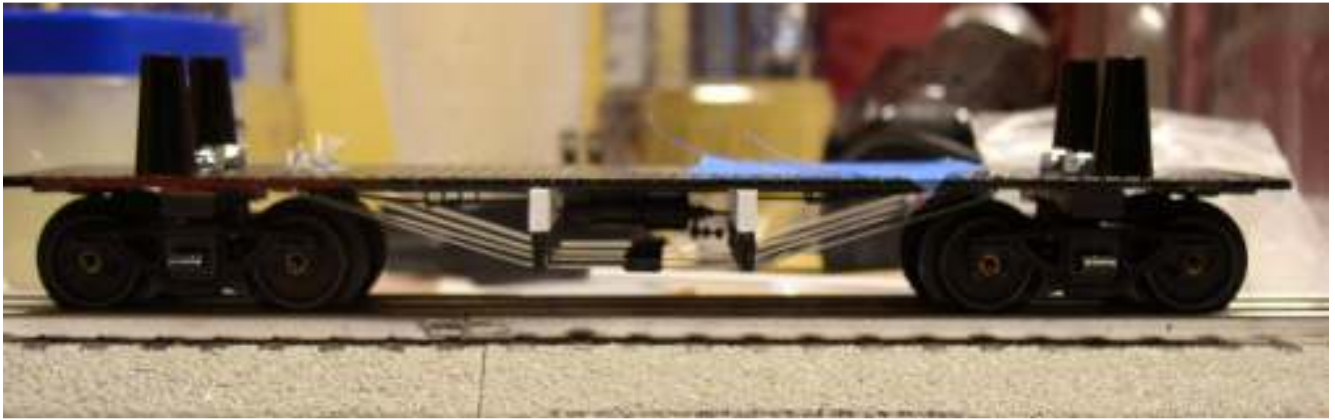
Work begins on the underframe. The car wheelbase has been reduced by the width of one body bolster. Photo shows how they attach.



Trussrod locations are marked with a red Sharpie.



New queenpost beams were made from the pieces of the stock Atlas parts and styrene strip. Fishing line is used for the trussrods.



A preview of the finished chassis.



Body has been painted with Krylon Satin Pebble. This color is light brown but looks gray in the photo. Final color will be a combination of the green colors shown.



Completed car with freight trucks instead of caboose trucks as originally planned. I used both cans of green at the same time and let the colors blend. Glass added to windows. Decals were made for me by Rail Graphics. -JH